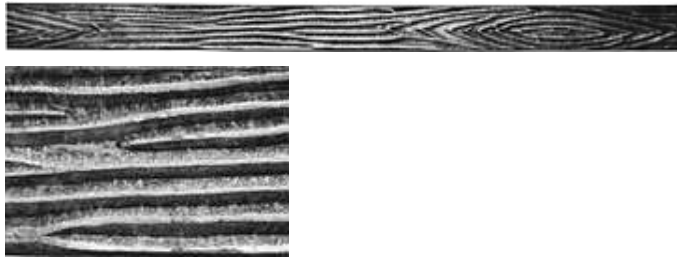


Wood Grain Flat Bars

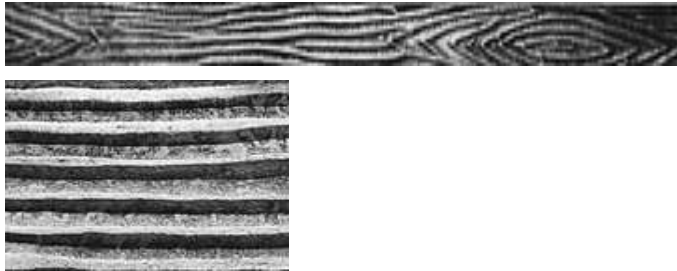


TBEB075-06

1/4" x 3/4" Wood Grain

22' Random Length
Approx. 10.5 lbs.

Available in any thickness, from 1/8" to 1", in steel, copper, aluminum and brass.

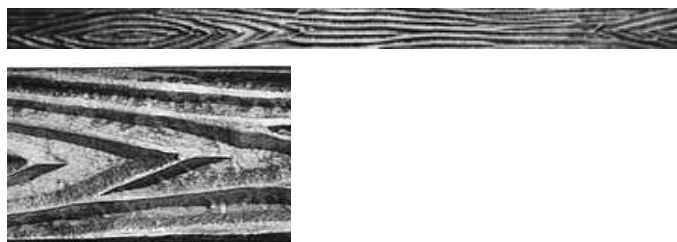


TBEB100-06

1/4" x 1" Wood Grain

22' Random Length
Approx. 17 lbs.

Available in any thickness, from 1/8" to 1", in steel, copper, aluminum and brass.

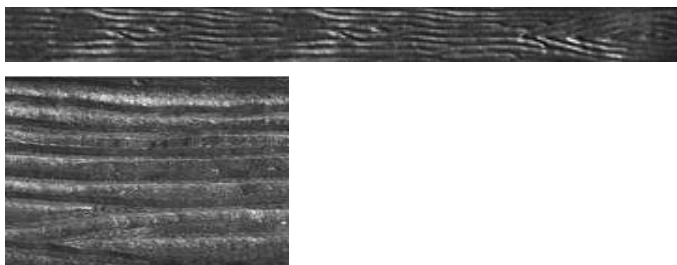


TBEB125-06

1/4" x 1 1/4" Wood Grain

22' Random Length
Approx. 21.5 lbs.

Available in any thickness, from 1/8" to 1", in steel, copper, aluminum and brass.

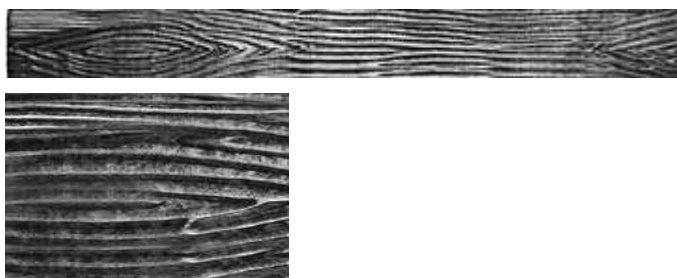


TBEB150-06

1/4" x 1 1/2" Wood Grain

22' Random Length
Approx. 26 lbs.

Available in any thickness, from 1/8" to 1", in steel, copper, aluminum and brass.



TBEB200-06

1/4" x 2" Wood Grain

22' Random Length
Approx. 34 lbs.

Available in any thickness, from 1/8" to 1", in steel, copper, aluminum and brass.

Elite Architectural Metal Supply

655 Lively Blvd / P.O Box 1301
Elk Grove Village, IL 60007

847-636-1233 voice
847-516-1388 fax

sales@elitearchitecturalmetal.com