

# Hammered Square Bars

**3/8" - 1/2" - 9/16"**



TBSB037-03

## **3/8" Edge Hammered**

20' Random Length  
Approx. 10 lbs.

All sizes and patterns are available in steel, aluminum, copper and brass unless noted.



TBSB050-03

## **1/2" Edge Hammered**

20' Random Length  
Approx. 17 lbs.

All sizes and patterns are available in steel, aluminum, copper and brass unless noted.



TBSB050-05

## **1/2" Hammered & Chiseled**

21' Random Length  
Approx. 17 lbs.

All sizes and patterns are available in steel, aluminum, copper and brass unless noted.



TBSB056-03

## **9/16" Edge Hammered**

### **Aluminum and Brass only**

Random Length

**Elite Architectural Metal Supply**

655 Lively Blvd / P.O Box 1301  
Elk Grove Village, IL 60007

847-636-1233 voice  
847-516-1388 fax

[sales@elitearchitecturalmetal.com](mailto:sales@elitearchitecturalmetal.com)

# Hammered Square Bars

5/8" - 3/4" - 7/8"



TBSB062-03

## 5/8" Edge Hammered

20' Random Length  
Approx. 27 lbs.

All sizes and patterns are available in steel, aluminum, copper and brass unless noted.



TBSB062-05

## 5/8" Hammered & Chiseled

Random Length  
Approx. 27 lbs.

All sizes and patterns are available in steel, aluminum, copper and brass unless noted.



TBSB075-03

## 3/4" Edge Hammered

20' Random Length  
Approx. 38 lbs.

All sizes and patterns are available in steel, aluminum, copper and brass unless noted.

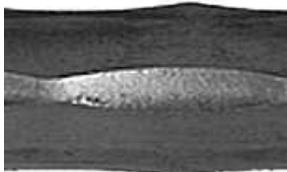


TBSB075-05

## 3/4" Hammered & Chiseled

Random Length  
Approx. 38 lbs.

All sizes and patterns are available in steel, aluminum, copper and brass unless noted.



TBSB087-03

## 7/8" Edge Hammered

Random Length  
Approx. 52 lbs.

All sizes and patterns are available in steel, aluminum, copper and brass unless noted.

**Elite Architectural Metal Supply**

655 Lively Blvd / P.O Box 1301  
Elk Grove Village, IL 60007

847-636-1233 voice  
847-516-1388 fax

[sales@elitearchitecturalmetal.com](mailto:sales@elitearchitecturalmetal.com)

# Hammered Square Bars

1" - 1 1/4"



TBSB100-03

## **1" Edge Hammered**

20' Random Length  
Approx. 68 lbs.

All sizes and patterns are available in steel, aluminum, copper and brass unless noted.

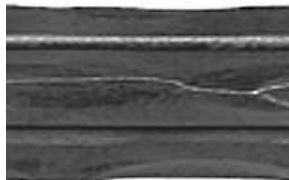


TBSB100-05

## **1" Hammered & Chiseled**

Random Length  
Approx. 68 lbs.

All sizes and patterns are available in steel, aluminum, copper and brass unless noted.



TBSB125-05

## **1 1/4" Hammered & Chiseled**

Random Length  
Approx. 106 lbs.

All sizes and patterns are available in steel, aluminum, copper and brass unless noted.

**Elite Architectural Metal Supply**

655 Lively Blvd / P.O Box 1301  
Elk Grove Village, IL 60007

847-636-1233 voice  
847-516-1388 fax

[sales@elitearchitecturalmetal.com](mailto:sales@elitearchitecturalmetal.com)