

Hammered Round Bars

3/8" - 5/16"

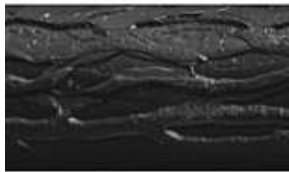


TBRB031-03

5/16" Edge Hammered

Random Length
Approx. 5 lbs.

Available in steel, copper, aluminum and brass.



TBRB031-06

5/16" Wood Grain

Random Length
Approx. 5 lbs.

Available in steel, copper, aluminum and brass.



TBRB037-03

3/8" Edge Hammered

Random Length
Approx. 8 lbs.

Available in steel, copper, aluminum and brass.



TBRB037-06

3/8" Wood Grain

Random Length
Approx. 8 lbs.

Available in steel, copper, aluminum and brass.

Elite Architectural Metal Supply

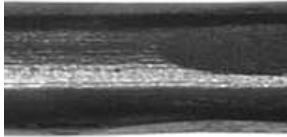
655 Lively Blvd / P.O Box 1301
Elk Grove Village, IL 60007

847-636-1233 voice
847-516-1388 fax

sales@elitearchitecturalmetal.com

Hammered Round Bars

7/16" - 1/2"

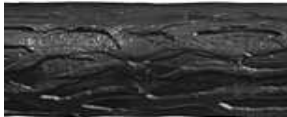


TBRB044-03

7/16" Edge Hammered

Random Length
Approx. 10 lbs.

Available in steel, copper, aluminum and brass.



TBRB044-06

7/16" Wood Grain

Random Length
Approx. 10 lbs.

Available in steel, copper, aluminum and brass.

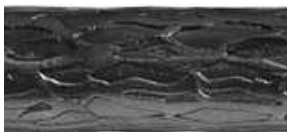
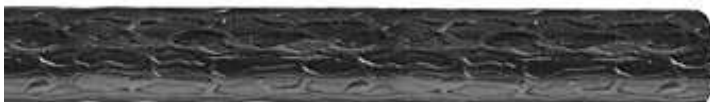


RB050-03

1/2" Edge Hammered

Random Length
Approx. 14 lbs.

Available in steel, copper, aluminum and brass.



RB050-06

1/2" Wood Grain

Random Length
Approx. 14 lbs.

Available in steel, copper, aluminum and brass.

Elite Architectural Metal Supply

655 Lively Blvd / P.O Box 1301
Elk Grove Village, IL 60007

847-636-1233 voice
847-516-1388 fax
sales@elitearchitecturalmetal.com

Hammered Round Bars

9/16" - 5/8"

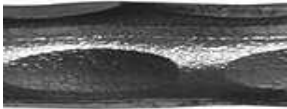


RB056-03

9/16" Edge Hammered

Random Length
Approx. 17 lbs.

Available in steel, copper, aluminum and brass.



RB056-06

9/16" Wood Grain

Random Length
Approx. 17 lbs.

Available in steel, copper, aluminum and brass.



TBRB062-03

5/8" Edge Hammered

Random Length
Approx. 21 lbs.

Available in steel, copper, aluminum and brass.

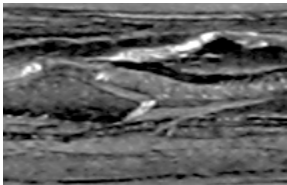


TBRB062-06

5/8" Wood Grain

Random Length
Approx. 21 lbs.

Available in steel, copper, aluminum and brass.



Elite Architectural Metal Supply

655 Lively Blvd / P.O. Box 1301
Elk Grove Village, IL 60007

847-636-1233 voice
847-516-1388 fax

sales@elitearchitecturalmetal.com

Hammered Round Bars

3/4" - 7/8"

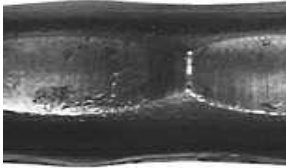


RB075-03

3/4" Edge Hammered

Random Length
Approx. 30 lbs.

Available in steel, copper, aluminum and brass.

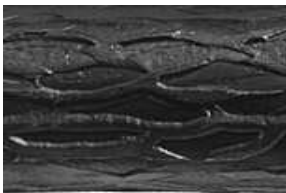


RB075-06

3/4" Wood Grain

21' Random Length
Approx. 30 lbs.

Available in steel, copper, aluminum and brass.

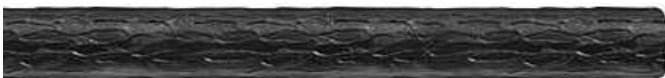
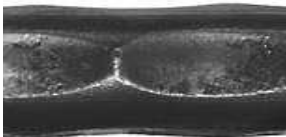


RB087-03

7/8" Edge Hammered

Random Length

Available in steel, copper, aluminum and brass.



RB087-06

7/8" Wood Grain

21' Random Length

Available in steel, copper, aluminum and brass.



Elite Architectural Metal Supply

655 Lively Blvd / P.O Box 1301
Elk Grove Village, IL 60007

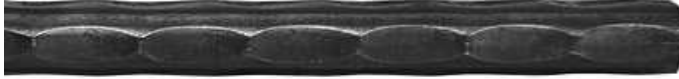
847-636-1233 voice

847-516-1388 fax

sales@elitearchitecturalmetal.com

Hammered Round Bars

1" - 1 1/4"

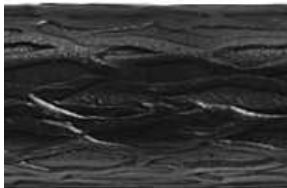


TBRB100-03

1" Edge Hammered

Random Length
Approx. 54 lbs.

Available in steel, copper, aluminum and brass.

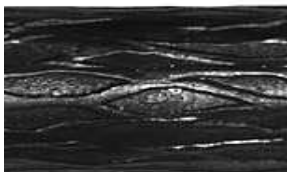
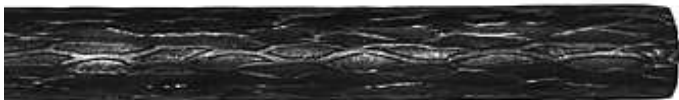


TBRB100-06

1" Wood Grain

21' Random Length
Approx. 54 lbs.

Available in steel, copper, aluminum



TBRB125-06

1 1/4" Wood Grain

21' Random Length
Approx. 84 lbs.

Available in steel, copper, aluminum and brass.

Elite Architectural Metal Supply

655 Lively Blvd / P.O Box 1301
Elk Grove Village, IL 60007

847-636-1233 voice
847-516-1388 fax
sales@elitearchitecturalmetal.com