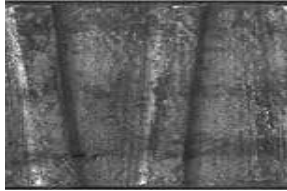
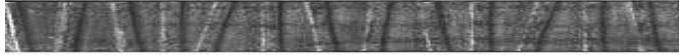


Hammered & Pattern Flat Bars

1/4" x 1 1/2"

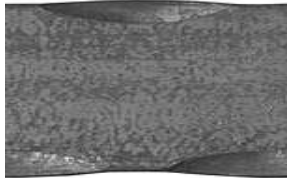


TBEB150-01

1/4" x 1 1/2" Wavy Hammered

21' Random Length
Approx. 26 lbs.

Available in any thickness, from 1/8" to 1", in steel, copper, aluminum and brass.

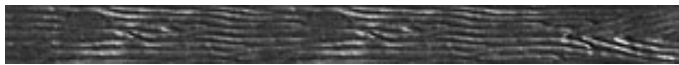


TBEB150-03

1/4" x 1 1/2" Edge Hammered

20' Random Length
Approx. 26 lbs.

Available in any thickness, from 1/8" to 1", in steel, copper, aluminum and brass.



TBEB150-06

1/4" x 1 1/2" Wood Grain

22' Random Length
Approx. 26 lbs.

Available in any thickness, from 1/8" to 1", in steel, copper, aluminum and brass.



TBEB150-07

1/4" x 1 1/2" Pebble Stone and Edge Hammered

Random Length
Approx. 26 lbs.

Available in any thickness, from 1/8" to 1", in steel, copper, aluminum and brass.

Elite Architectural Metal Supply

655 Lively Blvd / P.O Box 1301
Elk Grove Village, IL 60007

847-636-1233 voice
847-516-1388 fax

sales@elitearchitecturalmetal.com

Hammered & Pattern Flat Bars

1/4" x 1 1/2" Continued



TBEB150-10

1/4" x 1 1/2" Angle Chiseled and Edge Hammered

Random Length
Approx. 26 lbs.

Available in any thickness, from 1/8" to 1", in steel, copper, aluminum and brass.



TBEB150-11

1/4" x 1 1/2" Sunflower / Leaf

22' Random Length
Approx. 26 lbs.

Available in any thickness, from 1/8" to 1", in steel, copper, aluminum and brass.



TBEB150-12

1/4" x 1 1/2" Oval Chiseled & Hammered

22' Random Length
Approx. 26 lbs.

Available in any thickness, from 1/8" to 1", in steel, copper, aluminum and brass.



TBEB150-13

1/4" x 1 1/2" Sunflower

22' Random Length
Approx. 26 lbs.

Available in any thickness, from 1/8" to 1", in steel, copper, aluminum and brass.

Elite Architectural Metal Supply

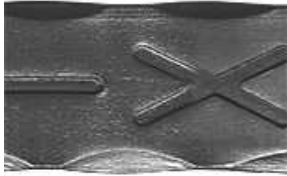
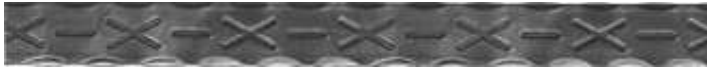
655 Lively Blvd / P.O Box 1301
Elk Grove Village, IL 60007

847-636-1233 voice
847-516-1388 fax

sales@elitearchitecturalmetal.com

Hammered & Pattern Flat Bars

1/4" x 1 1/2" Continued

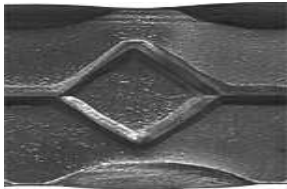


TBEB150-15

1/4" x 1 1/2" X-Hatch

21' Random Length
Approx. 26 lbs.

Available in any thickness, from 1/8" to 1", in steel, copper, aluminum and brass.

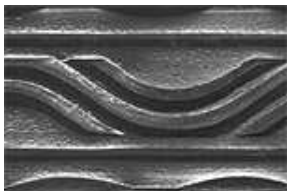


TBEB150-16

1/4" x 1 1/2" Diamonds

20' Random Length
Approx. 26 lbs.

Available in any thickness, from 1/8" to 1", in steel, copper, aluminum and brass.



TBEB150-17

1/4" x 1 1/2" Triple Chisel Wave & Edge Hammered

22' Random Length
Approx. 26 lbs.

Available in any thickness, from 1/8" to 1", in steel, copper, aluminum and brass.



TBEB150-18

1/4" x 1 1/2"

23' Random Length
Approx. 26 lbs.

Available in any thickness, from 1/8" to 1", in steel, copper, aluminum and brass.

Elite Architectural Metal Supply

655 Lively Blvd / P.O Box 1301
Elk Grove Village, IL 60007

847-636-1233 voice
847-516-1388 fax

sales@elitearchitecturalmetal.com

Hammered & Pattern Flat Bars

1/4" x 1 1/2" Continued



TBEB150-18

1/4" x 1 1/2" Leaves

23' Random Length
Approx. 26 lbs.

Available in any thickness, from 1/8" to 1", in steel, copper, aluminum and brass.



TBEB150-19

1/4" x 1 1/2" Edge Circles with Chiseled

22' Random Length
Approx. 26 lbs.

Available in any thickness, from 1/8" to 1", in steel, copper, aluminum and brass.

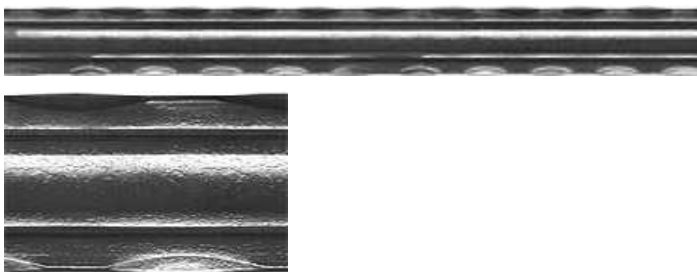


TBEB150-20

1/4" x 1 1/2" X-Dot with Double Chisel

22' Random Length
Approx. 26 lbs.

Available in any thickness, from 1/8" to 1", in steel, copper, aluminum and brass.



TBEB150-21

1/4" x 1 1/2" Double Chisel Groove with Edge Hammered

22' Random Length
Approx. 26 lbs.

Available in any thickness, from 1/8" to 1", in steel, copper, aluminum and brass.

Elite Architectural Metal Supply

655 Lively Blvd / P.O Box 1301
Elk Grove Village, IL 60007

847-636-1233 voice
847-516-1388 fax

sales@elitearchitecturalmetal.com

Hammered & Pattern Flat Bars

1/4" x 1 1/2" Continued

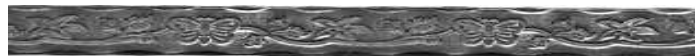


TBEB150-22

1/4" x 1 1/2" Circle Dot with Edge Hammered

21' Random Length
Approx. 26 lbs.

Available in any thickness, from 1/8" to 1", in steel, copper, aluminum and brass.

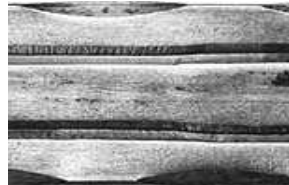


TBEB150-23

1/4" x 1 1/2" Butterflies

22' Random Length
Approx. 26 lbs.

Available in any thickness, from 1/8" to 1", in steel, copper, aluminum and brass.



TBEB150-25

1/4" x 1 1/2" Double Chiseled & Edge Hammered

Random Length
Approx. 26 lbs.

Available in any thickness, from 1/8" to 1", in steel, copper, aluminum and brass.



TBEB150-27

1/4" x 1 1/2" Vine Chiseled & Edge Hammered

23' Random Length
Approx. 26 lbs.

Available in any thickness, from 1/8" to 1", in steel, copper, aluminum and brass.

Elite Architectural Metal Supply

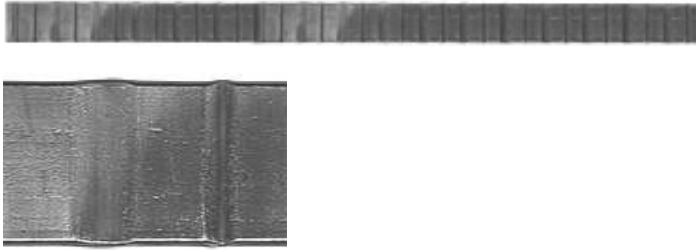
655 Lively Blvd / P.O Box 1301
Elk Grove Village, IL 60007

847-636-1233 voice
847-516-1388 fax

sales@elitearchitecturalmetal.com

Hammered & Pattern Flat Bars

1/4" x 1 1/2" Continued

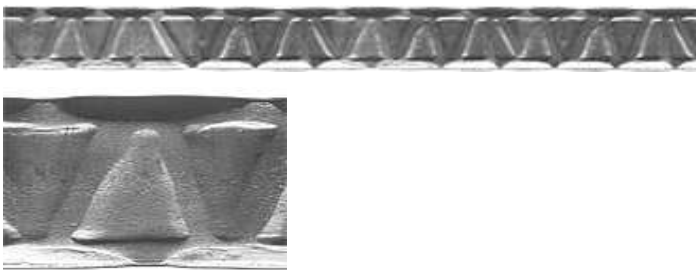


TBEB150-28

1/4" x 1 1/2" Surface Chiseled

Random Length
Approx. 26 lbs.

Available in any thickness, from 1/8" to 1", in steel, copper, aluminum and brass.



TBEB150-29

1/4" x 1 1/2" Roman Hammered

Random Length
Approx. 26 lbs.

Available in any thickness, from 1/8" to 1", in steel, copper, aluminum and brass.

Elite Architectural Metal Supply

655 Lively Blvd / P.O Box 1301
Elk Grove Village, IL 60007

847-636-1233 voice
847-516-1388 fax

sales@elitearchitecturalmetal.com