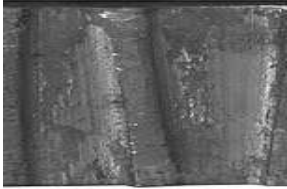
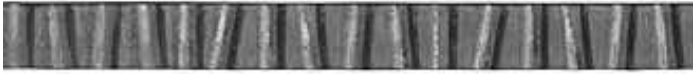


# Hammered & Pattern Flat Bars

**1/4" x 1"**

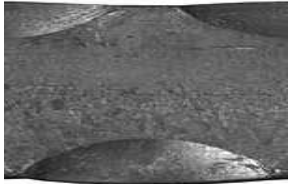


TBEB100-01

**1/4" x 1" Wavy Hammered**

21' Random Length  
Approx. 17 lbs.

Available in any thickness, from 1/8" to 1", in steel, copper, aluminum and brass.

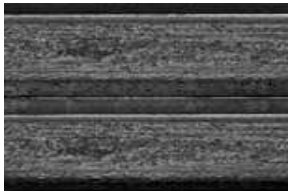


TBEB100-03

**1/4" x 1" Edge Hammered**

20' Random Length  
Approx. 17 lbs.

Available in any thickness, from 1/8" to 1", in steel, copper, aluminum and brass



TBEB100-04

**1/4" x 1" Chiseled**

22' Random Length  
Approx. 17 lbs.

Available in any thickness, from 1/8" to 1", in steel, copper, aluminum and brass.



TBEB100-05

**1/4" x 1" Hammered & Chiseled**

21' Random Length  
Approx. 17 lbs.

Available in any thickness, from 1/8" to 1", in steel, copper, aluminum and brass.



TBEB100-28

**1/4" x 1" Surface Chiseled**

Random Length  
Approx. 17 lbs.

Available in any thickness, from 1/8" to 1", in steel, copper, aluminum and brass.

**Elite Architectural Metal Supply**

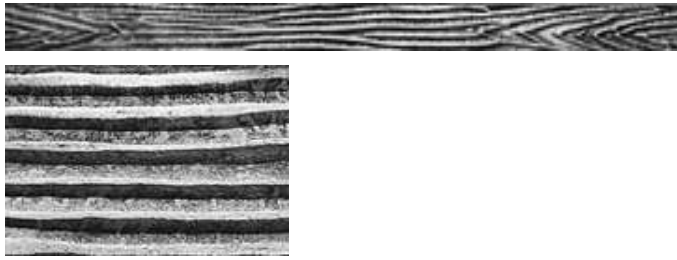
655 Lively Blvd / P.O Box 1301  
Elk Grove Village, IL 60007

847-636-1233 voice  
847-516-1388 fax

[sales@elitearchitecturalmetal.com](mailto:sales@elitearchitecturalmetal.com)

# Hammered & Pattern Flat Bars

## 1/4" x 1" Continued

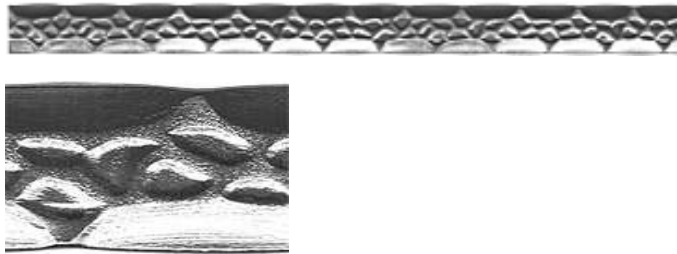


TBEB100-06

### **1/4" x 1" Wood Grain**

22' Random Length  
Approx. 17 lbs.

Available in any thickness, from 1/8" to 1", in steel, copper, aluminum and brass.

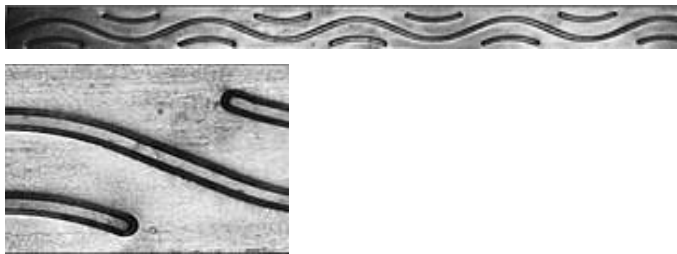


TBEB100-07

### **1/4" x 1" Pebble Stone and Edge Hammered**

Random Length  
Approx. 17 lbs.

Available in any thickness, from 1/8" to 1", in steel, copper, aluminum and brass.



TBEB100-09

### **1/4" x 1" Wavy Chiseled**

Random Length  
Approx. 17 lbs.

Available in any thickness, from 1/8" to 1", in steel, copper, aluminum and brass.



TBEB100-14

### **1/4" x 1" Vine**

Random Length  
Approx. 17 lbs.

Available in any thickness, from 1/8" to 1", in steel, copper, aluminum and brass.



TBEB100-26

### **1/4" x 1" Double Chiseled**

Random Length  
Approx. 17 lbs.

Available in any thickness, from 1/8" to 1", in steel, copper, aluminum and brass.

**Elite Architectural Metal Supply**

655 Lively Blvd / P.O Box 1301  
Elk Grove Village, IL 60007

847-636-1233 voice  
847-516-1388 fax

[sales@elitearchitecturalmetal.com](mailto:sales@elitearchitecturalmetal.com)